



THE SHIRES

Paddock Wood | Kent | TN12 6YD

STUART REYNOLDS

POWERED BY
exp™ UK



Paddock Wood boasts a diverse range of shopping amenities, local eateries & for convenient transport into the capital, there's a mainline station with services to London Charing Cross, Waterloo East, Cannon Street and London Bridge. For public transport, there are no fewer than 5 nearby bus stops within walking distance and the travel connections of the M20 J3 and M26 J2A are both accessible and under 10 miles away.

For the first time since 2010, this two-bedroom terraced house is on the market and offering the distinct benefit from having no onward chain. It is ideally situated in a cul-de-sac setting, just a short walk from all the aforementioned amenities. The entrance hallway paves the way to a fitted kitchen, separate lounge and garden room. Two bedrooms and upstairs bathroom complete the layout.

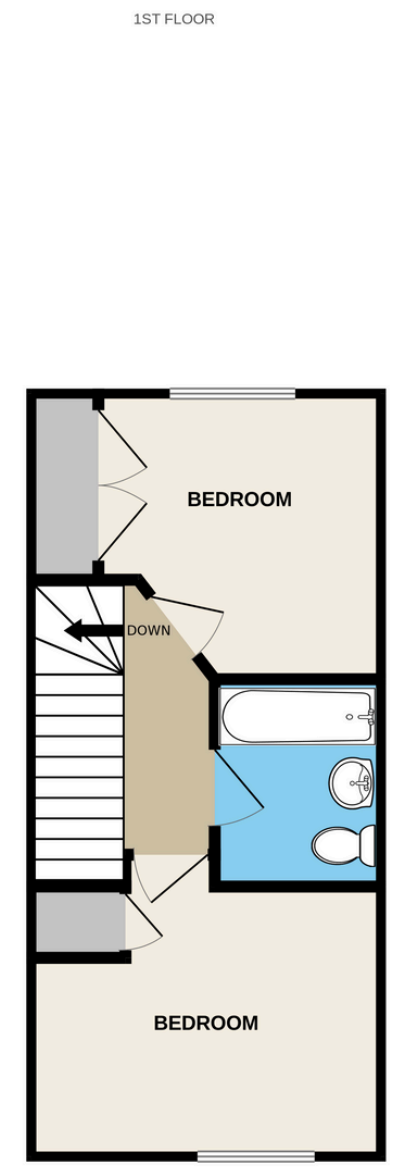
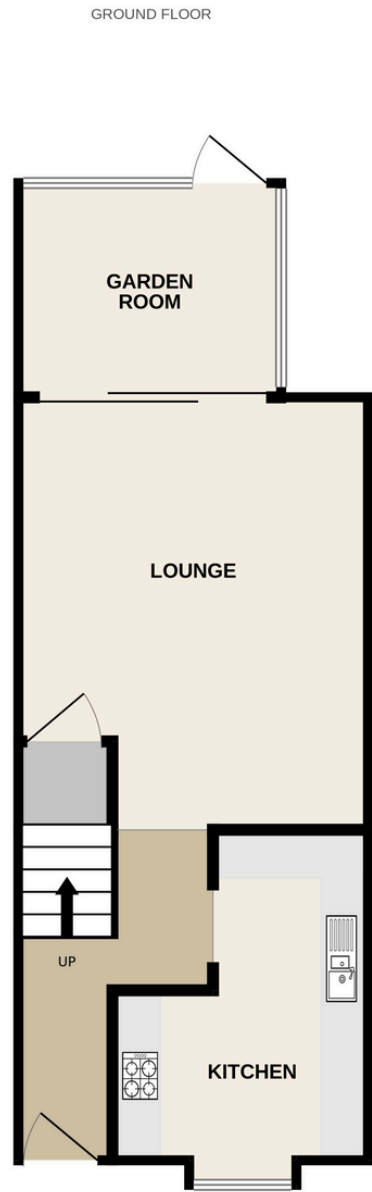
Moving outside, the home enjoys an enclosed garden and has the benefit of a private allocated parking space.



Ground Floor
Entrance Hallway
Kitchen - 10'8 x 8
Lounge - 14'2 x 11'5
Conservatory - 8'7 x 7

First Floor
Landing
Bedroom - 11'5 x 8'10
Bedroom - 9'3 x 9
Bathroom

Outside
Rear Garden
Private Allocated Parking



Helping People Move Home Since 1996



STUART REYNOLDS

exp UK

Your Local Independent Estate Agent



01732 647009

@sreynoldsrealestate

www.stuartreynolds.exp.uk.com